

Cat Domestic Short Hair Male castrated 12 y old Mid-ventricular obstruction "dual chamber left ventricle"

Dr. Caludio Bussadori, MD. DVM Dipl. ECVIM (Cardiology)
Clinica Veterinaria Gran Sasso, Milan, Italy

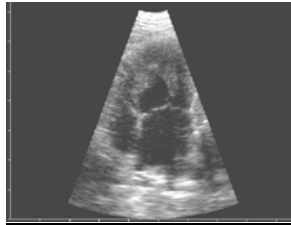


Fig 2176
Moderate left ventricular hipertrophy, moderate left atrial dilatation.

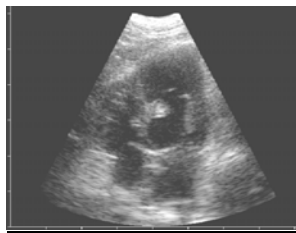


Fig 2175
Slight rotation from the previous image.

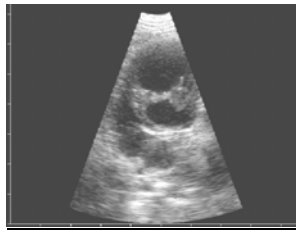


Fig 2178
Further rotation from apical view.

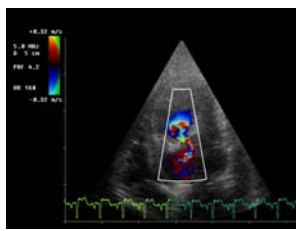


Fig 4237
mid ventricular systolic obstruction

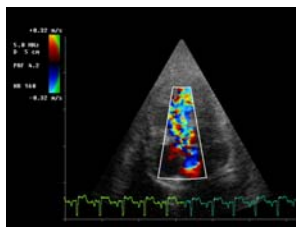


Fig 4239
mid ventricular diastolic obstruction

Cat Domestic Short Hair Male castrated 12 y old Mid-ventricular obstruction
"dual chamber left ventricle"

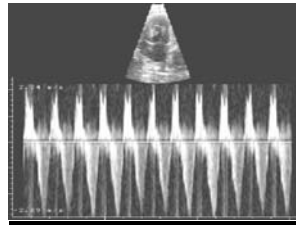


Fig 2181
Doppler CW analysis of the mid
ventricular obstruction

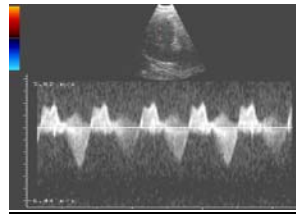


Fig 2380
Doppler CW analysis of the mid
ventricular obstruction

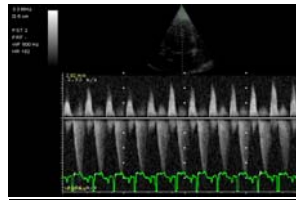


Fig 4238
Doppler CW analysis of the mid
ventricular obstruction six months
after, where the restrictive profile
of the inflow demonstrate the
increased end diastolic pressure of
the apical cavity